

*Oklahoma State University*

# STATE GREEK

2025-2026



# TABLE OF CONTENTS

<b>FRATERNITY &amp; SORORITY COMMUNITY</b>	<b>PANHELLENIC RECRUITMENT</b>	<b>CHAPTER INFORMATION</b>
Welcome Letter	Academic Standards	Sorority Chapter Profiles
pg. 2	& Recruitment Registration	pg. 22-33
Panhellenic Executive Council	pg. 11	Terms to Know
pg. 3	Recruitment Housing	pg. 34
Fraternity & Sorority Community	pg. 12	Greek Alphabet & Pronunciations
pg. 4	Statement on Legacies &	pg. 35
Panhellenic Pillars & Creed	Recommendation Letters	
pg. 5	pg. 13	<b>FREQUENTLY ASKED QUESTIONS</b>
Extracurricular Involvement	Recruitment Schedule	FAQs
pg. 6	pg. 14	pg. 37
Financial Commitment	Values-Based Recruitment	Note-Taking Pages
pg. 7	pg. 15	pg. 38
Alcohol Policy & Hazing Code	Recruitment Rounds	Greek Neighborhood Map
pg. 8	pg. 16-20	Back cover page
Strategic Plan & Mental Health Resources		
pg. 9		

## FRATERNITY & SORORITY COMMUNITY

### Oklahoma State University

#### OFFICE OF FRATERNITY & SORORITY AFFAIRS

321 Student Union | Stillwater, OK 74078 | (405) 744-5490 | [gogreek.okstate.edu](http://gogreek.okstate.edu)

**Casey Domnick**

Assistant Director of Fraternity & Sorority Affairs

**McKinley Paratore**

Coordinator of Fraternity & Sorority Affairs

#### SORORITY RECRUITMENT CONTACT INFORMATION

[panhellenic.okstate.edu](http://panhellenic.okstate.edu) | (405) 744-6583 | [sororityrecruitment@okstate.edu](mailto:sororityrecruitment@okstate.edu)

X: @OkSUPanhellenic | Instagram: @okstatepanhellenic

Facebook: Oklahoma State University Panhellenic

Although the information in this document is believed valid, certain printed material is subject to change without notification.





## WELCOME TO OKLAHOMA STATE UNIVERSITY!

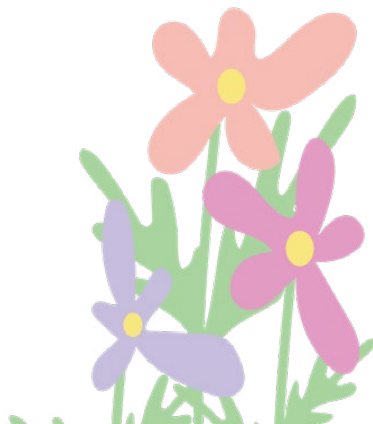
We are beyond excited that you have chosen Oklahoma State as your new home and have taken an interest in sorority life. Our fraternity and sorority community is amongst the finest in the country with continuous recognition for our scholarship, community service, and leadership development. The Panhellenic Council oversees OSU's twelve National Panhellenic Conference chapters. Our executive council is made up of nine sorority women who work diligently to create a unified community. We strive to help women create genuine friendships and increase their community involvement. Together, Panhellenic women can make a big impact on OSU and our surrounding community.

When you choose to commit to sorority life, you gain membership in something greater than yourself. You will find the women who share your values within the place you'll call your lifelong home. As women who know how powerful sisterhood truly is, we could not be more excited for you to make this journey your own. In the Panhellenic community, you will find support, encouragement, and endless love. We hope that throughout the recruitment process, you hold your values close to your heart and find a sisterhood that feels most true to you. Each of our chapters is made up of strong women each with diverse backgrounds and unique personalities.

If you have any questions, please feel free to contact us at (405) 744-6583 or by email at [sororityrecruitment@okstate.edu](mailto:sororityrecruitment@okstate.edu). We cannot wait for you to embark on this journey and find the women that feel like sisters to you. You are so loved!

Warmly,

**Courtney, Jorja, and Julianna**  
Recruitment Coordinators



# PANHELLENIC EXECUTIVE COUNCIL

## 2025 OFFICERS



**Addison**  
President



**Courtney**  
VP of Judicial Affairs



**Rylee**  
VP of Administration



**Emory**  
VP of Public Relations



**Caroline**  
VP of Education



**Cameron**  
VP of Programming



**Dora**  
VP of Community Outreach



**Jorja**  
External VP of Recruitment



**Julianna**  
Internal VP of Recruitment



# FRATERNITY & SORORITY COMMUNITY

Greek Life at Oklahoma State University is composed of over 48 fraternity and sorority chapters and four governing councils; the Interfraternity Council, Multicultural Greek Council, National Pan-Hellenic Council, and Panhellenic Council. Fraternity and sorority membership offers students a unique opportunity to have a balanced college life with a focus on academic excellence, brotherhood/sisterhood, leadership development, community service and responsible social interaction. Greek affiliation also allows students to make lasting friendships with individuals with similar ideals and common purposes.

## INTERFRATERNITY COUNCIL

The Interfraternity Council at Oklahoma State is traditionally an all-male council that comprises 20 chapters, and approximately 1,700 men. Our values embody leadership development, philanthropy, academic achievement, and brotherhood which all work together to produce men that contribute to the upward march of humanity. The Executive Council oversees the self-governance aspect of the organization and is led by our President, 5 Vice Presidents, and the Director of Recruitment. We exist to foster a spirit of friendliness and community at Oklahoma State for our time on campus and the years to come! Go Pokes!

**Parker Huizinga**  
Interfraternity Council President  
Instagram: @okstateifc

## MULTICULTURAL GREEK COUNCIL

The Multicultural Greek Council at Oklahoma State University was established to meet the needs of ethnic fraternities and sororities that were not being met by the traditional fraternity and sorority community. MGC comprises nine chapters including alpha Kappa Delta Phi International Sorority, Inc., Alpha Pi Omega Sorority, Inc., Kappa Delta Chi Sorority, Inc., Omega Delta Phi Fraternity, Inc., Sigma Lambda Alpha Sorority, Inc., Theta Nu Xi Sorority, Inc., Lambda Phi Epsilon International Fraternity, Inc., Sigma Lambda Beta Fraternity, Inc., Sigma Lambda Gamma National Sorority, Inc. and is currently growing. As a council we pride ourselves on high academic achievements and community service.

**Anthony Acevedo**  
Multicultural Greek Council President  
Instagram: @okstatemgc

## NATIONAL PAN-HELLENIC COUNCIL

The National Pan-Hellenic Council at Oklahoma State University comprises seven chapters of our nine historically black organizations often referred to as the Divine Nine. These consist of Alpha Phi Alpha Fraternity, Inc., Alpha Kappa Alpha Sorority, Inc., Omega Psi Phi Fraternity, Inc., Delta Sigma Theta Sorority, Inc., Kappa Alpha Psi Fraternity, Inc., Phi Beta Sigma Fraternity, Inc., and Zeta Phi Beta Sorority, Inc. We value sister/brotherhood, scholarship and community service. We strive to make our presences known on campus by staying involved in the community by hosting events, giving back and staying engaged.

**Audrel Burge**  
National Pan-Hellenic Council President  
Instagram: @okstatenphc



# WHAT IS PANHELLENIC?

The Panhellenic Council is led by a team of executive officers elected by their peers. The Panhellenic Council consists of delegates from the 12 OSU sorority chapters. The council acts as the central governing body of the sorority community. The Panhellenic Executive Council is actively involved with chapter development, including leadership opportunities for chapters and their members, compiling grade statistics for individual chapters and the Panhellenic Association, coordinating campus and community service projects, and making resource materials available to help combat chapter issues. They are also in charge of organizing recruitment, including compiling and publishing recruitment materials for incoming students and training recruitment counselors to represent Panhellenic spirit to potential new members. Finally, the Panhellenic Executive Council represents all sororities at regional and national meetings, and represents all sorority women by serving on university committees.

# GREEK PILLARS

## ACADEMICS

Sororities concentrate on creating successful scholarship programs that help each member reach her academic goals. These programs include study halls, academic mentors, study files and support technology. Chapters take great pride in their academic efforts and encourage their members to make education a top priority. Because of this strong commitment to scholarship, the all-sorority average GPA consistently exceeds the OSU undergraduate all-women's average. The Panhellenic GPA for the fall 2024 semester was a 3.49 while the all non-greek undergraduate women's GPA was 3.25.

## PHILANTHROPY

Sorority involvement in community service is a priority among all chapters at OSU. Sorority women contribute volunteer efforts and monetary donations to a number of worthwhile local and national organizations, some of which are highlighted on the sorority profile pages of this booklet. The Panhellenic Association heavily supports many local philanthropies and participates in other campus wide service projects. These provide OSU sorority women the opportunity to grow as civic-minded leaders. In 2024, students raised nearly a quarter of a million dollars and gave more than 50,000 hours of their time.

## LEADERSHIP

Sorority women and fraternity men hold more than half of the leadership positions on the Oklahoma State University campus. Not only do sorority women seek out leadership positions on campus, but they also assume leadership roles within the individual chapters and in the Panhellenic community as a whole. Sororities encourage active involvement in campus organizations and foster the skills necessary for their members to become strong leaders. Additional leadership development programming within

## SISTERHOOD

At Oklahoma State, sororities enable young women to establish strong friendships that last far beyond their college years. Affiliation provides members with an opportunity to interact with other students of all ages, backgrounds, and interests. Members meet a diverse group of people within the Greek community and other students organizations. Membership offers a network of support while students are making the transition to college life.

# PANHELLENIC CREED

We, as undergraduate members of women's fraternities, stand for good scholarship, for guarding of good health, for maintenance of fine standards, and for serving, to the best of our ability, our college community. Cooperation for furthering life, in harmony with its best possibilities, is the ideal that shall guide our fraternity activities.

We, as fraternity women, stand for service through the development of character inspired by close contact and deep friendship of individual fraternity and Panhellenic life. The opportunity for wide and wise human service, through mutual respect and helpfulness, is the tenet by which we strive to live.





# EXTRACURRICULAR INVOLVEMENT

## HOMECOMING

Oklahoma State University hosts one of the largest homecomings in America with considerable participation from the fraternity and sorority community. Sororities are paired with fraternities to build large, colorful structures in their yards known as “house decs,” which is short for house decoration. Each member of a fraternity or sorority is required to work on their “house dec” for a certain number of hours each week as designated by the chapters. At OSU, this is known as “pomping.” The hours vary by chapter and are based on work completed and work left to be done. In the past, hours have ranged from five to 10 hours per week. Special accommodations can be made for individuals with particularly demanding schedules or for participants in Freshman Follies. These “house decs” are the focus of Friday night’s Walkaround to which thousands of people come from all over the country to view the displays. The fraternity and sorority community also participates in the Harvest Carnival, sign competition, spirit rally and offers tremendous support for the football team. Homecoming truly is the highlight of the fall semester and a source of great pride for many of the fraternities and sororities at OSU.

## INTRAMURALS

Participation in intramurals provides chapters with the opportunity to bond and socialize with each other. Many chapters pair up as a way to build relationships or simply be entertained together. Oklahoma State has a wide variety of options to choose from whether it is the more traditional softball or soccer to the less common ultimate frisbee and water-polo. Whether the sport is a beloved favorite or completely new to the individual, all are encouraged to participate by either supporting the team and cheering from the sidelines or competing. Intramurals are a great way to relieve stress, have fun, and make memories. Many different types of leagues are offered such as open, co-rec competitive, co-rec recreational, specific leagues for Greek life. The energetic environment makes intramurals a staple of Greek life.

## SHOWS

Shows have become a cherished tradition within Greek Life here at Oklahoma State University. There are three different shows throughout the length of a school year: Follies, Varsity Revue, and Spring Sing. Follies is the first and has been a tradition of the Oklahoma State University Greek community for more than 50 years. Held annually during the fall semester, Follies has allowed students to light up the stage with singing, dancing and “cheesing” since 1970. Follies raised \$98,000 for Stillwater Public Schools Performing Arts program in 2024.

This year, Varsity Revue (VR) celebrated 96 years at Oklahoma State University making it one of the oldest traditions remaining. VR is put on by members of all ages and takes place in the first half of the spring semester. It was originally created to raise desperately-needed funds for the marching band in 1929. Today, Varsity Revue consists of most of the Greek organizations performing Broadway-styled acts while raising money to donate to the United Way of Payne County, which raised \$85,000 in 2025.

Spring Sing is the final show in the school year at Oklahoma State University which benefits Cowboys vs Cancer, and has been a long-standing tradition in the Greek community for almost 60 years. This year, Spring Sing raised \$30,000. Spring Sing is held annually in the Gallagher-Iba Basketball Arena on Spring Family Weekend and sees over 2,000 guests in attendance.



# FINANCIAL COMMITMENT

Oklahoma State University Panhellenic Association has adopted a resolution regarding financial transparency during Panhellenic recruitment processes. In a spirit of transparency and accountability, this information will be provided to potential new members before, during, and after the Formal Recruitment process. The information in this booklet includes all required costs of Panhellenic membership for the 2025 – 2026 year as reported in spring of 2025. Total costs include all member dues, chapter fees, and assessments including inter/national fees, required apparel, housing and/or parlor fees, etc. In addition to mandatory expenses, there may also be additional, optional expenses such as T-shirts. Students are encouraged to determine how much they will allocate for these expenses at the beginning of each semester.

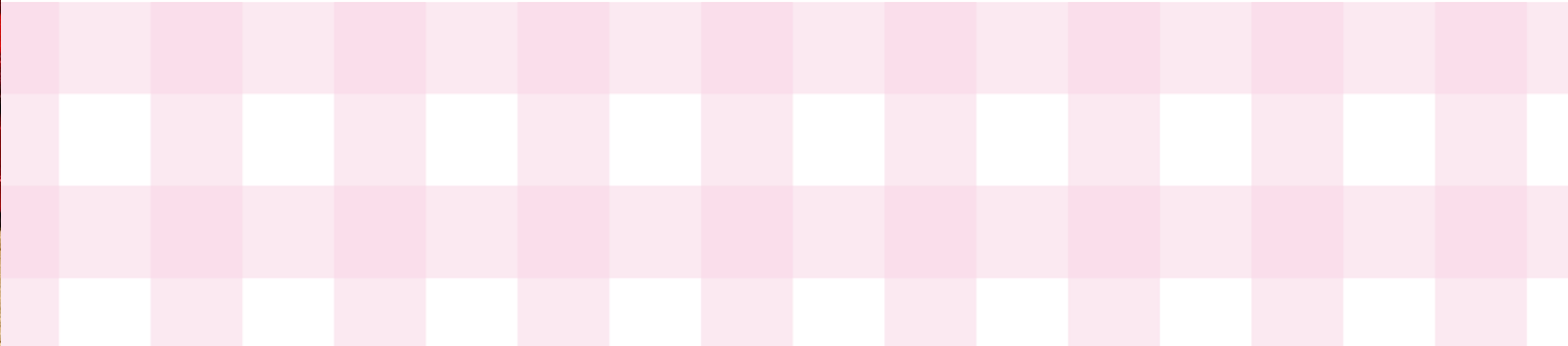
**NEW MEMBER FEE:**  
Many chapters will have one-time fees which include, but are not limited to: initiation fees, new member fees, building funds, security deposits and badge fees.

**IN-HOUSE MEMBER:**  
This includes room and board, weekday meals, membership and chapter dues, as well as some miscellaneous fees that will vary from chapter to chapter on a semester basis.

**OUT-OF-HOUSE MEMBER:**  
This includes use of the sorority house, some meals, membership and chapter dues, as well as other small fees associated with that chapter on a semester basis. All of these fees and dues are stated in each chapter’s pages starting on page 22.

# PANHELLENIC PHILANTHROPY

Infant Crisis Services is a nonprofit focused on being a place of comfort for babies, toddlers, and families of all backgrounds in our communities. Based in Oklahoma City, OK, this nonprofit takes pride in its unique three step approach: rescue, feed, and connect. In addition to providing families with a week’s worth of infant and toddler necessities, they are also connected to resources around the state should they need further assistance. Through this monumental system, ICS has been providing countless infants and toddlers with basic necessities since 1984. Oklahoma State’s Panhellenic Council is overjoyed with the opportunity to partner with a local philanthropy that aides the people in our very own, special Oklahoma community.





POTENTIAL NEW MEMBER  
BILL OF RIGHTS

A potential new member has:

- The right to be treated as an individual;
- The right to be fully informed about the recruitment process;
- The right to ask questions and receive true and objective answers from recruitment counselors and members;
- The right to be treated with respect;
- The right to be treated as a capable and mature person without being patronized;
- The right to ask how and why and receive straight answers;
- The right to have and express opinions to recruitment counselors;
- The right to have inviolable confidentiality when sharing information with recruitment counselors;
- The right to make informed choices without undue pressure from others;
- The right to be fully informed about the binding agreements implicit in the membership acceptance signing;
- The right to make one’s own choice and decision and accept full responsibility for the results of that decision; and
- The right to have a positive, safe and enriching recruitment experience.

EQUAL OPPORTUNITY &  
NON-DISCRIMINATION POLICY

The National Panhellenic Conference and Oklahoma State University, in compliance with Title VI of the Civil Rights Act of 1964 and Title IX of the Education Amendments of 1972 (Higher Education Act), do not discriminate on the basis of race, color, religion, national origin or ethnicity in any of their policies, practices or procedures.

Note: The Panhellenic Council and each member chapter have adopted and are required to follow the policies listed on this page. Any violation will result in a judicial board hearing. Copies of both the Alcohol Policy and Hazing Code can be found on the Office of Fraternity & Sorority Affairs’ website at <http://gogreek.okstate.edu>.

ALCOHOL POLICY

- The organization, members and guests must comply with all federal, state, provincial and local laws. No person under the legal drinking age may possess, consume, provide or be provided alcoholic beverages.
- The organization, members and guests must follow the federal law regarding illegal drugs and controlled substances. No person may possess, use, provide, distribute, sell and/or manufacture illegal drugs or other controlled substances while on chapter/organizational premises or at any activity or event sponsored or endorsed by the chapter/organization.
- No alcoholic beverages may be purchased through or with organization funds or funds pooled by members or guests (admission fees, cover fees, collecting funds through digital apps, etc.).
- Common sources of alcohol, including bulk quantities and kegs, which are not being served by a licensed and insured third party vendor, are prohibited. Open parties are prohibited. Attendance by non-members at any event where alcohol is present must be by invitation only, and the organization must utilize a guest list system.
- Any event or activity related to the new member joining process (e.g., recruitment, intake, rush, etc.) must be substance free. No alcohol or drugs may be present if the event or activity is related to new member activities, meetings, or initiation into an organization, including but not limited to “bid night,” “big/little” events or activities, “family” events or activities and any ritual or ceremony.
- No organization may co-sponsor an event with an alcohol distributor or bar (bar defined as an establishment generating more than half of annual gross sales from alcohol) at which alcohol is given away, sold or otherwise provided to those present.
- No organization may co-sponsor, co-finance, attend, or participate in an event at which alcohol is purchased by any of the host organizations.
- The organization, members or guests must not permit, encourage, coerce, glorify or participate in any activities involving the rapid consumption of alcohol, such as drinking games.

HAZING CODE

The safety of all students within our fraternity and sorority community is our top priority. Any individuals and/or organizations participating in or sponsoring hazing behavior or activities will be held responsible as defined by the Oklahoma State University Code of Conduct. Hazing is defined as any activity which recklessly or intentionally endangers the mental health, physical health or safety of a student for the purpose of initiation or admission into, or affiliation with, any organization operating subject to the sanction of the public or private school or of any institution of higher education in the state of Oklahoma. In addition, the Student Code of Conduct document prohibits any form of racial, ethnic and sexual harassment.

GREEK 100

Founded in the fall of 2018, Greek 100 is making strides as the first student-led peer education program of its kind. Specifically focused on the fraternity and sorority life at Oklahoma State University, the facilitators from Greek chapters lead educational presentations to chapters on how to be an effective bystander. Chapter members are educated on how they can use their leadership skills and organization values to prevent sexual violence, hazing, and alcohol and drug abuse within the Oklahoma State community. Each organization has two presentations per semester with 95% of their members in attendance. Members from freshmen to seniors are expected to take action when they see something that does not align with their organization and OSU values. Greek 100 assures Oklahoma State Greek Life members have a positive sorority experience.



PANHELLENIC STRATEGIC PLAN

In 2021, the Panhellenic Executive team developed a strategic plan with three main goals to advance our community.

1. Fostering a Sense of Belonging
2. Empowering Member Development, Engagement, and Health
3. Expanding Cross Council and Campus Collaboration

These priorities are more than just strategic goals. They are a reflection of our collective promise to create a Panhellenic experience that is inclusive, accessible, and united. Our mission goes beyond just the recruitment process, but about building meaningful relationships, creating leadership opportunities, and growing a support network that lasts long after your time at Oklahoma State. Whether it's through shared experiences, service, or

simply showing up for each other, our strength lies in the connections we create. My hope is that as you go through this experience, you'll find women who challenge you, champion you, and celebrate you, both during your college years and beyond. This vision was built with you in mind. We want every woman who walks into our community to feel valued, supported, and seen, not just during recruitment, but throughout her entire journey at Oklahoma State. I hope you discover lasting friendships, leadership opportunities, and a sense of purpose here that extends far beyond your college years. There is space for you in the Oklahoma State Panhellenic Community and we can't wait for you to find it!

Sincerely,  
Addison | President, 2025 Panhellenic Council

MENTAL HEALTH RESOURCES

As a part of the Cowboy Family, we have to look out for each other. Taking care of your own mental health is certainly important, but we ask you to do your part in looking out for fellow Cowboys. By becoming educated, trained and prepared, we can all work together to end the stigma surrounding mental health.

To find more information about OSU's resources please visit <https://bit.ly/3zD8zJC> or scan the QR code below.





# PANHELLENIC RECRUITMENT

## ACADEMIC STANDARDS

The Panhellenic Council does not set specific academic requirements/standards for potential new members to participate in recruitment. However, it is important to understand each chapter has grade point average requirements set by its inter/national organization and the local members. These individual requirements are listed on the sorority profile pages later in the booklet.

The high school GPA that the Panhellenic Council accepts is the **Core GPA** provided by the Office of Undergraduate Admissions, which is defined below.

- 15-Unit Core Curricular Requirements:
- 4 units of English (grammar, composition and literature);
  - 3 units of mathematics (algebra I, geometry, algebra II and above);
  - 3 units of history and citizenship skills (one unit of American history and two units from the subjects of history, economics, geography, government, civics and/or non-western culture);
  - 3 units lab science (biology, chemistry, physical sciences, physics or any lab science certified by school district); and
  - 2 units of other courses selected from any of the sections above or computer science or foreign language.
  - AP and higher-level IB courses are identified and weighted in the Core GPA (i.e. If a student makes a B in AP language composition, it is calculated as an A. An earned A grade is given an extra point when calculated.)
  - While the State Regents strongly support the initiation of honors courses, honors weighting will not be used in the calculation of either high school (overall or core) GPA because there is no equitable mechanism to include the honors premium.

The above information can be found online at <https://admissions.okstate.edu/admission-requirements#freshmen>.

Please don't forget to send your final transcript to the Office of Undergraduate Admissions as soon as you are able because all academic information (high school and/or college GPA(s) and ACT and/or SAT scores) provided to chapters will be verified through the Student Information System (SIS). Your application will not be complete without the final transcript(s). The Panhellenic Council and Office of Fraternity & Sorority Affairs are not responsible for lost, misplaced, or late transcripts due to the Office of Undergraduate Admissions. It is the responsibility of the student to contact the Office of Undergraduate Admissions before the Recruitment registration deadline to ensure all necessary documents have been received.

If your high school GPA is below a 3.0 or your college GPA is below a 2.7 (on a 4.0 scale), you may have significantly fewer opportunities than participants with higher GPAs. Potential new members who do not meet the minimum academic requirements of a specific chapter are typically released early in the recruitment process to allow these women to explore other alternatives. After accepting membership in a chapter, there are academic requirements for women to stay active in the chapter during their time at OSU. The GPA requirements differ from chapter to chapter. Inquiring about academic standards is a wonderful idea for conversations during recruitment. Additionally, each woman must be a full-time OSU student to be considered an active member of one of our 12 chapters.

## RECRUITMENT REGISTRATION

Registration for formal recruitment is available online at <http://gogreek.okstate.edu> or at [panhellenic.okstate.edu](http://panhellenic.okstate.edu). Registration is now open and will close July 30, 2025, at 11:59 p.m.

- The following information will be required for registration:
- OSU email address
  - Digital photo
  - Campus Wide Identification Number (CWID).
  - Activities, honors and service. Including this information will create a resume for you.
  - T-shirt size
  - Parent/guardian email address. Parents/guardians have the opportunity to receive summer updates and nightly emails during recruitment week. Each PNM may provide two email addresses for parents/guardians.

Once beginning the registration process, be sure you complete all the information at that time. If you do not complete everything at once, your information will not be saved, and you will have to start the process from the beginning. Therefore, it is helpful to have the aforementioned information handy when beginning the registration process.

After registering online, please follow the instructions to pay online or mail your \$110 registration fee and \$5 administrative fee to:

Panhellenic Recruitment  
Oklahoma State University  
321 Student Union  
Stillwater, OK 74078

Checks should be made payable to “Panhellenic Recruitment.” Please put your name and CWID in the check’s memo line.

The payment must be received by the registration deadline for your registration to be complete. If payment is mailed, it must be postmarked by July 30, 2025. No late applications or materials will be accepted! There will be no refunds after this date.

A confirmation will be sent to you within two weeks of the Panhellenic Council receiving your registration materials. If your confirmation states any part of your registration materials are missing or incomplete, those items should be called in or mailed immediately to the Panhellenic Council.





# RECRUITMENT HOUSING

Thanks to a partnership with the Department of Housing and Residential Life, the Panhellenic Council hopes to make the transition from home to college as seamless as possible for recruitment participants. Therefore, you will be moving into your permanent housing assignment on campus for formal recruitment. You are to report to the appropriate desk listed below based on your housing assignment in order to move in. Please note only you will be allowed to acquire the key for your room. Parents/ guardians will not be granted access to a room without you present. Women participating in recruitment will have the option to move in on Monday, August 11.

## IF YOU’LL BE LIVING IN >>> REPORT TO...

Booker-Stinchcomb, Bost, Carreker East & Carreker West, Davis, McPherson, Morsani-Smith, Payne Ellis, Sitlington, Young & Zink-Allen >>> Griffith Community Center	Bennett >>> Bennett Desk
Kamm & Peterson-Friend >>> Patillo Community Center	Zink-Allen >>> Zink-Allen Lobbies
Wentz, Parker & Patchin-Jones >>> Wentz Hall Desk	North University Commons, South University Commons & West University Commons >>> West Commons Desk
Villages & Iba >>> Village A/Fit Desk	Stout >>> Stout Desk

The Department of Housing and Residential Life will facilitate the early arrival process. Questions regarding move-in logistics or the early arrival process can be directed to the Department of Housing and Residential Life at (405) 744-5592. Please note that women who will not be living on campus during the fall semester are responsible for their own housing and parking permit during formal recruitment.

## CHECKING IN FOR RECRUITMENT

### MONDAY, AUGUST 11

The check-in process for recruitment is very important. First and foremost, please note that moving into your permanent housing assignment does NOT automatically check you in for formal recruitment. PNMs must report to their gamma chis during the first group meeting on the afternoon of Monday, August 11. Failure to check-in with their gamma chis will result in the PNM being unable to participate in recruitment.

### RECRUITMENT DINING

Each woman has meals included in the cost of the registration fee. This meal plan includes two designated lunches and one dinner. All other meals throughout the week will be independent and individuals can use their semester meal plan to eat what they would like to on campus. This will help encourage PNMs to explore the on-campus dining options during the week of recruitment. We encourage PNMs to plan ahead to have snacks and breakfast available in their own dorm.



# STATEMENT ON LEGACIES

A legacy is defined differently by each inter/national organization. However, in general, a legacy is defined as a woman whose sister, mother or grandmother is a member of a National Panhellenic Conference sorority. Some chapters are asked by their inter/national organization to get to know each of its legacies participating in recruitment. Policies have changed in recent years, please check with your organization to check the latest policies. It is important to note a sorority is not obligated to offer a bid to a legacy, and a potential new member is not obligated by anyone to commit to a chapter where she is a legacy.

Please remember that the ultimate decision to join a chapter rests with the potential new member. The potential new member should not make a decision or be under pressure based on her legacy affiliation. The potential new member should make a choice based on where she is most comfortable, not on the experience of another individual.

# RECOMMENDATION LETTERS

A letter of recommendation, also referred to as a Recruitment Information Form(RIF), is written by an alumna member of an organization for the purpose of introducing a woman to a chapter. It provides a brief description of her interests, activities, and personality. A letter of recommendation is often a checkbox and may not even be viewed by the chapter so please do not stress if you are unable to get one for a chapter. The standards and policies set by the National Panhellenic Conference regarding letters of recommendation state:

"The responsibility for providing letters of recommendation for prospective new members rests with the members of NPC fraternities, and recruitment information distributed through College and Alumnae Panhellenics shall contain nothing that infers that letters of recommendation must be secured by the potential new member.

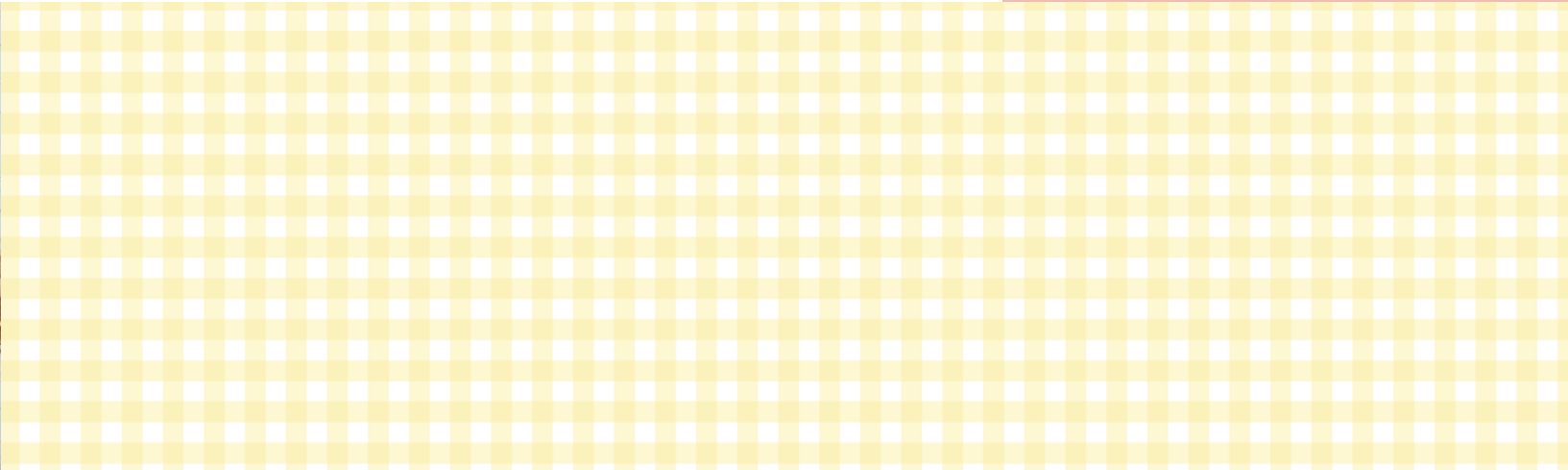
Individual NPC member groups will clarify this responsibility with their membership. NPC area advisors will clarify this responsibility with College and Alumnae Panhellenics. Remuneration from the potential new member or her family for any such letter is inappropriate."

Recommendation letters may be considered in the membership selection process, however they are in no way required for joining any chapter and some chapters may not accept them. An alumna member unfamiliar with the recommendation letter process can visit her inter/national organization’s website for further instructions. The letter of recommendation should be submitted electronically via the inter/national organization’s website. Any recommendation letters received by the Office of Fraternity & Sorority Affairs and/or by the Panhellenic Council will be destroyed. Registering with a local Alumnae Panhellenic Association for recommendation letters does not register you for recruitment. To register, you must complete the online registration form. See page 11 for more information on registration.

## POTENTIAL NEW MEMBER CHECKLIST

We recommend having a tote bag to bring along with you from round to round! Here are some ideas of what to include:

- Walking shoes
- Hand-held fan
- Portable charger
- Notepad & pen
- Water bottle
- Mints/gum
- Snacks and breakfast food
- Hand sanitizers
- Band-aids
- Makeup mirror
- Perfume/body spray
- Deodorant
- Hairbrush
- Oil blotting pads
- Sunglasses
- Umbrella
- Personal medications
- Money for dinner on your own
- Open mind & Positive attitude!





# RECRUITMENT SCHEDULE

<b>Tuesday, August 5</b> .....	<b>Meet with your Gamma Chi</b>	<b>Wednesday, August 13</b> .....	<b>Philanthropy (Round 2)*</b>
		8:00 a.m. - 9:00 a.m.	Meet with your Gamma Chi
		9:00 a.m. - 12:05 p.m.	Events at chapter houses
		12:05 p.m. - 2:00 p.m.	Lunch
		2:00 p.m - 5:55 p.m.	Events at chapter houses
<b>Wednesday, August 6</b> .....	<b>Open House via Zoom (Round 1)</b>	<b>Thursday, August 14</b> .....	<b>Sisterhood (Round 3)*</b>
8:00 a.m. - 11:50 a.m.	Events with chapter houses	7:00 a.m. - 8:30 a.m.	Meet with your Gamma Chi
11:50 a.m. - 12:50 p.m.	Lunch	8:30 a.m. - 12:15 p.m.	Events at chapter houses
12:50 p.m - 2:30 p.m.	Events with chapter houses	12:15 p.m. - 1:45 p.m.	Lunch
		1:45 p.m - 7:30 p.m.	Events at chapter houses
<b>Thursday, August 7</b> .....	<b>Open House via Zoom (Round 1)</b>	<b>Friday, August 15</b> .....	<b>Preference (Round 4)*</b>
8:00 a.m. - 12:25 p.m.	Events with chapter houses	7:00 a.m.	Meet with your Gamma Chi
		8:05 a.m. - 12:45 p.m.	Events at chapter houses
		2:00 p.m. - 3:00 p.m.	Attend college spotlight
		3:30 p.m. - 5:00 p.m.	Attend Convocation
<b>Monday, August 11</b> .....	<b>Move In &amp; Check-In</b>	<b>Saturday, August 16</b> .....	<b>Bid Day (Last Round)*</b>
<b>Tuesday, August 12</b> .....	<b>Philanthropy (Round 2)*</b>		
8:00 a.m. - 9:00 a.m.	Meet with your Gamma Chi		
9:00 a.m. - 12:05 p.m.	Events at chapter houses		
12:05 p.m. - 2:00 p.m.	Lunch		
2:00 p.m - 5:55 p.m.	Events at chapter houses		

\* Times are tentative and may change closer to time. Please check your email for any scheduling updates.

## ATTENDANCE

## GAMMA CHI

Recruitment, much like sorority membership itself, is a process that requires a reasonable commitment of time and effort. The Panhellenic Council has adopted a no-tolerance policy regarding missed days or events. Women participating in recruitment must be available to attend all scheduled invitational rounds and evening events; exceptions will be made only for university-related activities (i.e. OSU Band or OSU Athletics). Potential new members are expected to be present at every chapter event they are scheduled to attend on any given day. Failure to do so will result in dismissal from recruitment. Women who have unavoidable conflicts that will require absences from recruitment events are encouraged to contact the Panhellenic Recruitment team to discuss their options.

During formal recruitment week, you will have the opportunity to be introduced to women who are a member of a sorority chapter at Oklahoma State University. She was selected by her peers and completed an application and interview process. She has disaffiliated from her chapter so she can be a friend and guide to you. Disaffiliation means she does not have contact with her own chapter throughout the recruitment process. These women will be here to assist you and to model the Panhellenic Spirit to you. Therefore, she will only go by her first name during recruitment. These women are called Gamma Chi's.

Gamma Chi's have been through hours of training in preparation for recruitment. These women are educated to answer any questions you may have. They will always be available to the PNMs to handle problems and offer guidance in a one - on - one situation. Gamma Chi's will keep anything you tell them in confidence, so you can be open with them about any problems you have during recruitment.



# VALUES-BASED RECRUITMENT

Value Based Recruitment focuses on what is important to each individual woman going through recruitment. With this approach, both chapters and PNMs find their match based on their respective values and interests, rejecting the superficiality and materialism that can distract from our core purpose. Recruitment here at Oklahoma State is focused on what it really means to be in a sorority and the true sisterhood that the members experience. The purpose of Values Based Recruitment is to lead the PNMs to confidence that their connection with their chapter will continue through their membership for all four years of their college experience, and for life!

## MUTUAL SELECTION PROCESS

Recruitment is a mutual selection process that balances the preferences of each potential new member with those of the existing sorority chapters. The Panhellenic Council strives to allow every young woman an opportunity to find a sorority that best suits her personality, interests and future goals, while providing an organized and unbiased membership selection process for the chapters. Invitations are only guaranteed to potential new members for the first round, which takes place on Wednesday, August 6. There is no guarantee that a PNM will be invited to attend the second, third, or fourth event rounds. Invitations to subsequent rounds are made based on the selections of the chapters and the preferences of the potential new members. PNM schedules will be maximized so they are able to meet with as many chapters as possible

during their recruitment experience. There is no guarantee that a woman will receive a bid to any sorority. However, if a potential new member progresses through the week and attends all the events she is invited to during the fourth event round and lists each of those chapters on her preference sheet that night, she will receive a bid to one of those chapters. There is no specific formula that explains why a woman is released from a particular chapter, or why a woman prefers one chapter more than another. The Panhellenic Council makes every effort to allow each potential new member the best opportunity to join the sorority of her choice, but there are no guarantees a young woman will be placed within that specific sorority. It is important to keep an open mind during recruitment week and to use the time to meet and make new friends.

## CONTINUOUS OPEN BIDDING

**Continuous Open Bidding (COB)** is an informal sorority recruitment process that begins after formal recruitment ends in the fall and continues through the end of the spring semester. **Fall Formal Recruitment & COB:** If a woman decides to withdraw from formal recruitment, she must complete an exit interview with her recruitment counselor and a Panhellenic recruitment staff member. She'll also need to sign an official release form. If she's interested in COB, she can sign up for it during the exit process.

**COB Process:** Registration for COB opens on the morning of Bid Day and continues through the end of the Spring semester. It should be noted that only chapters that fall below Panhellenic Total are eligible to participate in COB. There is no guarantee that any sorority chapter will participate in COB. If sorority chapters are participating, they may start reaching out to potential new members as early as Bid Day. Chapters can offer bids at any point during COB.If you have any questions, feel free to contact us at [sororityrecruitment@okstate.edu](mailto:sororityrecruitment@okstate.edu) or call (405) 744-6583.

## CHAPTER CONTACT

The National Panhellenic Conference has amended the Promotion of the Sorority Experience policy. Chapters may reach out to Potential New Members to promote the overall sorority experience - **not** recruit for their own organization. This contact must only be positive and in Panhellenic spirit. Absolutely no conversations should be centered around their own chapter. The Potential New Member is more than welcome to respond to the chapter members, but if any conversation becomes uncomfortable, or there are any conversations involving promising of bids, please reach out to the Panhellenic Recruitment Team at [sororityrecruitment@okstate.edu](mailto:sororityrecruitment@okstate.edu).





# ROUND 1 - VIRTUAL OPEN HOUSE

WILL TAKE PLACE PRIOR TO RECRUITMENT WEEK - AUGUST 6 & 7, 2025

### VIRTUAL ROUND

The first round of recruitment will be virtual on Zoom. This round will be Wednesday, August 6 and Thursday, August 7 beginning at 8:00 a.m., and ending at a maximum of 2:30 p.m. Each party will last 20 minutes, with a 15 minute break in between. Everyone will have a lunch break from 11:50 a.m.-12:50 p.m., on Wednesday, August 6, and be finished by 12:25 p.m. on Thursday, August 7. Parties will begin again immediately after the lunch break. You will only attend 12 chapters at Oklahoma State via zoom and must attend each party virtually to continue participating in the formal recruitment process. There are a total of 18 parties scheduled, but you will only attend 12. Your Gamma Chi will provide you with a detailed schedule closer to August 6. This round is required, so please make the appropriate arrangements in advance. PLEASE NOTE: PNMs will be required to attend an informational meeting over Zoom with their Gamma Chis and recruitment group on the evening of Tuesday, August 5. More details will be provided as this date approaches.

### CONVERSATION POINTERS

This is the first opportunity for potential new members to meet with chapter members virtually. Take this time to get to know each chapter while keeping an open mind and positive attitude.

### TIPS & TRICKS

- Be yourself!
- Choose a quiet spot with a simple background that you feel comfortable in.
- Wi-Fi is very important for this round! We cannot emphasize enough how important it is to make sure you have a stable connection throughout the whole day.
- Since this round is on zoom, a simple top will work. We suggest something not too casual and not too fancy, make sure you feel comfortable and confident.

### WHAT TO EXPECT

- Gamma Chis will be in contact with you closer to the week of recruitment to provide further instructions and answer any questions you may have.
- Gamma Chis will ensure you feel comfortable using zoom the day prior to round one.
- PNMs will have the opportunity to watch pre-recorded house tour videos prior to this round.

## SPECIAL ACCOMMODATIONS

We understand that some women may not feel comfortable having in person contact throughout the recruitment process due to health or personal concerns. We also know that some activities like Cowboy Marching Band or Summer Bridge programs can tend to overlap with our recruitment schedule. If either of these pertain to you, we do not want this to hinder your ability to join our community and so a completely virtual or hybrid option has been made available for potential new members. If you need to go through a virtual or hybrid recruitment process please reach out to us as

soon as possible so that we can arrange this for you. We have to know about special accommodations by July 30 at 11:59 a.m. By participating in a virtual or hybrid version of recruitment, you will not be hindered in the number of chapter houses you get to speak to or are invited back to. Please contact us by emailing [sororityrecruitment@okstate.edu](mailto:sororityrecruitment@okstate.edu) and include your first and last name, CWID, request for virtual or hybrid recruitment, and your available schedule from August 6-August 16.

# ROUND 2 - PHILANTHROPY

AUGUST 12 & 13, 2025

### CONVERSATION POINTERS

Round two will be the first time potential new members will get to visit with members in-person. PNMs will be given a presentation explaining the Chapter's philanthropy while in the house. Chapter members will be excited to meet you, and might ask you about the presentation you experienced. While some women will spend the entire time talking about philanthropies, you are encouraged to talk about anything that is important to you.

### TIPS & TRICKS

- If you choose to wear heels or wedges, bring comfy shoes to wear while walking from chapter to chapter.
- These rounds are great days to feel comfortable and adapt to the recruitment process. You will be provided with two t-shirts to pair with the bottoms of your choice.
- Research philanthropies you might not know about to form questions you might have for chapter members.

### WHAT TO EXPECT

- Conversations and stories that relate to the chapter's philanthropy.
- Discussions about how the chapter supports their philanthropies through events.
- PNMs will receive their schedule on Tuesday.
- You will receive your t-shirts on Monday at check-in.

### MEET & GREET

The maximum number of chapters a potential new member can attend on the second round is 9. It is not indicative of a bad experience if you do not receive the maximum number of houses; in fact, it is fairly rare to have the maximum number of chapters during a round. Remember, the end goal is to find one chapter to call home.





# ROUND 3 - SISTERHOOD

AUGUST 14, 2025

### CONVERSATION POINTERS

Take the time to ask questions about the chapter and financial commitments. The third round is also a great time to ask the members questions about what it is like to live in the chapter house, they will likely have stories they can share with you about their experiences.

### TIPS & TRICKS

- This round's theme is game day! Outfits including orange, black, or white would be a good direction.
- Remember how hot it will be when planning your outfits .
- We recommend reviewing each of the chapters financial commitments prior to this round.
- Ask the members questions about financial obligations of the chapter if you have any.

### WHAT TO EXPECT

- Stories and experiences the members have had while at the chapter house.
- PNMs will receive their schedule on Thursday morning.

### MEET & GREET

The maximum number of chapters a potential new member can attend on the third round is 6.



# ROUND 4 - PREFERENCE

AUGUST 15, 2025

### CONVERSATION POINTERS

The Fourth Round of recruitment is the last day potential new members and chapter members will have the opportunity to see each other before bid day and it is often the most serious and dressiest of the Four Rounds. On this day, we encourage you to ask chapter members any questions you have not had the chance to ask throughout the week. On this day, the chapter members will likely discuss with you why they chose their chapter when they went through recruitment.

### TIPS & TRICKS

- Be genuine.
- Spend time reflecting about your experiences over the past week.
- Be respectful of all ceremonies and members who are sharing their sisterhood with you.
- The attire is the dressiest on this day. We recommend wearing a dress, skirt or slacks. Be tasteful, and wear something in which you feel confident.

### WHAT TO EXPECT

- A serious and sometimes emotional day for both PNMs and chapter members.
- Decorated rooms that may reflect the chapters' colors, mascots, and flower.
- PNMs will receive their schedule on Friday morning.

### MEET & GREET

The maximum number of chapters a potential new member can attend on the fourth round is 2. You will have an opportunity to have a serious conversation with someone you have possibly already talked with during the week.





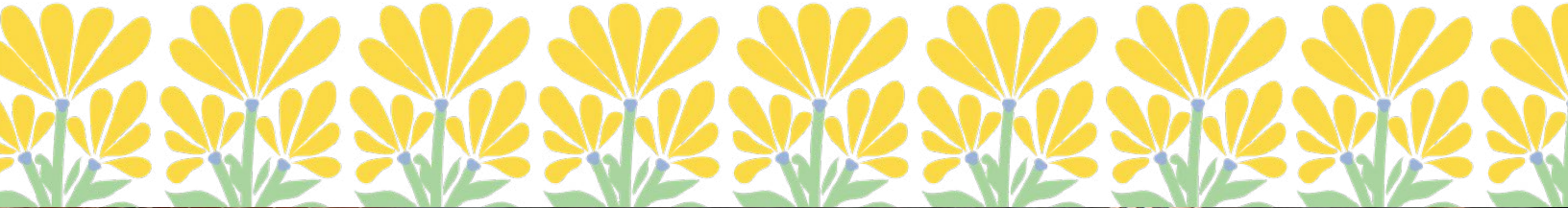
# BID DAY

AUGUST 16, 2025

Bid Day is the last day of recruitment on Saturday, August 16. This is when you may receive a formal invitation to membership from a sorority. You will be able to notify your parents/guardians upon receiving a bid. In an effort to keep bid day focused on the new members, guest attendance will be limited to two additional guests at the chapter facility with each new member. After you have accepted your invitation of membership, you will be escorted to your chapter house by a few members of your new sorority. Each chapter has planned a reception to receive all of their new members. The reception will begin as soon as you and the other new members arrive at the chapter house, between 12:00 p.m. and 1:00 p.m. There will be pictures taken, new member meetings, and activities to foster new friendships.

## MOVING INTO A CHAPTER HOUSE

It is very rare for a woman to be offered the opportunity to move directly into a chapter house. However, should you receive a bid from a sorority chapter that does have space for you to move into the chapter house, you must sign the digital housing cancellation form provided by the chapter and the Department of Housing and Residential Life by Monday, August 18, by 5 p.m. This online form will be provided by the chapter on Bid Day and requires a signature from the following individuals: you, your parent/guardian, and a chapter representative. Please note that you will also need to check out of your permanent housing assignment in order for the contract-breaking process to be complete. Checkouts can be arranged by contacting your Resident Assistant (RA) or Hall Staff. These typically require 24-hours' notice. Specifically for formal recruitment, failure to cancel your housing contract by completing the housing cancellation form on Monday, August 18 will result in housing charges. The information provided here is subject to change at any time without notice. Please contact the Office of Fraternity & Sorority Affairs during regular business hours with questions or concerns.



## CHAPTER INFORMATION





VALUES: WISDOM, DEVOTION, AND ACHIEVEMENT

## ALPHA CHI OMEGA

**Nickname:** “Alpha Chi”, “AXO”, “A Chi O”

**Local Chapter:** Gamma Epsilon

**National Founding Day:** October 15, 1885

**Local Founding Day:** March 8, 1947

**Colors:** Scarlet Red & Olive Green

**Mascot:** The Golden Lyre

**National Philanthropy:** The Alpha Chi Omega Foundation

**Local Philanthropy:** Wings of Hope - Stillwater

**GPA Requirements:** High school: 3.25/4.0 | College: 3.0/4.0

**Meals Served Per Week:** 14 (snacks provided on the weekends)

**Room & Board Dues:** \$5,300

**Out-of-House Dues:** \$2,235

**One-time New Member Fee:** \$475

**Women Per Room:** 1-3

**Length of New Member Program:** 6-8 weeks

**National Website:** <http://alphachiomega.org>

**Local Website:** <https://gammaepsilon-okstate.com/>

**Social Media:**

Instagram: @okstateaxo

TikTok: alphachiokstate

223 S. GARFIELD · STILLWATER, OK 74074



Dear Potential New Member,

I am thrilled and honored to welcome you, on behalf of Alpha Chi Omega, to Oklahoma State University! No matter the emotions, fears or desires you may be bringing into recruitment, my hope and prayer for you is that you too, just as countless women before us, will find your home. Every Panhellenic chapter here is unique, special and eager to invite you to glimpse what we love so dearly. At Alpha Chi Omega, one of our core values is devotion, an ideal I have seen lived out, daily, by each of my sisters. Our devotion to one another draws us closer and makes our sisterhood authentic. It's more than sharing formal dresses or having coffee study dates- our sisterhood is present when it feels as if no one else is. When the world is heavy, I have found shelter in my sisters' embraces. Undoubtedly, my college experience has been shaped by the bonds created from Alpha Chi Omega. While perhaps we may not know the trajectory of our lives, I can confidently envision this sisterhood to span beyond the four years of my time in college.

The woman before you, is due to the sisters who have stood behind me. My hope is for you to find this too. Walk confidently into each conversation you have, as you bring something to every room that no one else can ever carry. You are valuable, and this experience, while daunting, can unveil new depths to your character if you choose to let it. Know that behind our doors, you will always have a friendly face to greet you. Alpha Chi strives to build our sisters into Real. Strong. Women. This motto is one we truly embody. Ever you will find an honest, compassionate, determined woman to lean on at AXO. I'm grateful you're here! No matter where you end up, Alpha Chi will always be eager to cheer you on. Enjoy this process, truly. This week, and the outcome, will not define you. You are worthy, loved and seen as you enter into recruitment, and the same leaving! We're excited to meet you!

With love,

Katon Lunsford | Chapter President - Alpha Chi Omega



VALUES: SCHOLARSHIP, LEADERSHIP, SERVICE, AND SISTERHOOD

## ALPHA DELTA PI

**Nickname:** “ADPi”

**Local Chapter:** Alpha Omicron

**National Founding Day:** May 15, 1851

**Local Founding Day:** September 21, 1921

**Colors:** Azure Blue & White

**Mascot:** Lion & Diamond National

**National Philanthropy:** Ronald McDonald House Charities

**Local Philanthropy:** Our Daily Bread

**GPA Requirements:** High school: 3.2/4.0 | College: 2.85/4.0

**Meals Served Per Week:** 15 Meals (plus food on the weekends)

**Room & Board Dues:** \$5,660

**Out-of-House Dues:** \$2,680

**One-time New Member Fee:** \$440

**Women Per Room:** 2-4

**Length of New Member Program:** 8 weeks

**National Website:** [www.alphadeltapi.org](http://www.alphadeltapi.org)

**Local Website:** <http://okstate.alphadeltapi.org/>

**Social Media:**

Twitter: @OKState\_ADPI

Facebook: Oklahoma State Alpha Delta Pi

Instagram: @okstateadpi

1309 W. UNIVERSITY · STILLWATER, OK 74074

On behalf of the Alpha Omicron chapter of Alpha Delta Pi, we are absolutely thrilled to welcome you to Oklahoma State University! We are beyond excited that you've chosen to become part of this amazing Panhellenic community. Deciding to join Alpha Delta Pi has truly been one of the most meaningful choices of my life, and I know it will continue to shape my college experience in the best ways possible. ADPi has filled my life with unforgettable memories, deep friendships, strong mentorship, and countless opportunities to grow as a leader and a person. What makes Alpha Delta Pi so unique is the incredible women who make up our sisterhood. We come from all different backgrounds, with a wide range of majors, interests, and goals—but we are united by the shared values of love, loyalty, and friendship. These values are at the heart of everything we do and allow us to truly live out our open motto, “We live for each other.” The friendships built within Alpha Delta Pi go far beyond college—they're a source of unending support, a permanent place to be your authentic self, and a reminder that you are never alone. At Alpha Delta Pi, we firmly believe that during recruitment, each woman finds the place where she is meant to be. Please know that you are already loved and valued just as you are. My advice to you is to look for a chapter that feels like home—where you feel welcomed, seen, and uplifted. Find people who will challenge you to grow, cheer you on through your triumphs, and stand by you through the highs and lows of college. Recruitment can come with its ups and downs, but trust the journey and, most importantly, trust yourself. We can't wait to meet you, share our sisterhood with you, and support you through every step of the way. We're cheering you on and hoping you find a place in this community that feels like home—just like ADPi has been for me.

Loyally,

Madison Kennedy | Chapter President- Alpha Delta Pi







VALUES: CHARACTER, DIGNITY, SCHOLARSHIP, AND COLLEGE LOYALTY

VALUES: FRIENDSHIP, PERSONAL INTEGRITY, SERVICE, AND INVOLVEMENT

## ALPHA OMICRON PI

**Nickname:** “AOII”

**Local Chapter:** Omega Sigma

**National Founding Day:** January 2, 1897

**Local Founding Day:** April 22, 2012

**Colors:** Cardinal Red & Ambitious Pink

**Mascot:** Panda

**National Philanthropy:** The Arthritis Foundation

**Local Philanthropy:** The Saville Center for Child Advocacy

**GPA Requirements:** High school: 2.75/4.0 | College: 2.75/4.0

**Meals Served Per Week:** 14 (with stocked snack pantry) for in-house members &  
6 meals for out-of-house members

**Room & Board Dues:** \$5,285.50 per semester

**Out-of-House Dues:** \$1,629.50 per semester

**One-time New Member Fee:** \$625

**Women Per Room:** 2-4

**Length of New Member Program:** 6-8 weeks

**National Website:** <https://www.alphaomicronpi.org/>

**Local Website:** <https://okstate.alphaomicronpi.org/>

**Social Media:**

Instagram & TikTok: @okstateaoii

1407 W. FOURTH • STILLWATER, OK 74074



Dear potential new member, welcome to Oklahoma State! On behalf of the Omega Sigma Chapter of Alpha Omicron Pi, we are so excited for you to become a part of our Panhellenic community! Omega Sigma has truly become my home - a place where I have found not only belonging but also so much personal growth. The memories I’ve already created behind those red doors are ones I’ll cherish for a lifetime, and there are still so many more to come. Our tagline, “Inspire Ambition,” truly shines through in everything we do. This chapter saw something in me from the beginning that I didn’t yet see in myself, pushing me to dream big, embrace confidence, and strive for more each day.

The unwavering support of my sisters has allowed me to flourish in ways I never imagined possible. Our values of character, dignity, scholarship, and college loyalty are the foundation of our sisterhood. We carry ourselves with integrity and kindness, always striving to be the best versions of ourselves. We uphold dignity by carrying ourselves with respect and treating others with the same. This includes fostering a culture of mutual respect, where every member feels valued and heard. Our commitment to scholarship means we are continuously learning and always striving to do better. Lastly, we show our college loyalty by actively participating in campus events, supporting other student organizations, and proudly representing OSU in various activities. Together, these values bring us closer and strengthen the bonds of our sisterhood.

This process may be hard at times, but never forget how loved you are. Remember, we were all in your shoes once and are cheering you on every step of the way. I am endlessly grateful for the ways Omega Sigma and its incredible women have shaped me into the person I am today, and now I can’t imagine my life without it.

Alpha Love and Mine,

Taylor Short | Chapter President - Alpha Omicron Pi

## CHI OMEGA

**Nickname:** “Chi O”

**Local Chapter:** Tau Beta

**National Founding Day:** April 5, 1895

**Local Founding Day:** October 30, 1920

**Colors:** Cardinal Red & Straw

**Mascot:** Owl

**National Philanthropy:** Make-A-Wish Foundation

**Local Philanthropy:** Stillwater Humane Society

**GPA Requirements:** High school: 3.2/4.0 | College: 3.25/4.0

**Meals Served Per Week:** 14

**Room & Board Dues:** \$5,445 per semester

**Out-of-House Dues:** \$2,225 per semester

**One-time New Member Fee:** \$275

**Women Per Room:** 2-6

**Length of New Member Program:** 7 weeks

**National Website:** [chiomega.com](http://chiomega.com)

**Local Website:** <https://okstate.chiomega.com/>

**Social Media:**

Twitter: @okstatechio

Facebook: Oklahoma State Chi Omega

Instagram: @okstatechio

310 S. MONROE • STILLWATER, OK 74074

Hello! On behalf of the Tau Beta chapter of Chi Omega, I am truly honored to welcome you to Oklahoma State University! You are stepping into a Panhellenic community that is full of joy, growth, and lifelong friendships.

At Chi Omega, we are women inspired by our values—striving to serve others while keeping Chi Omega ever at heart. Our first and foremost purpose is Friendship. This is the foundation of who we are and what we do. In Chi Omega, you’ll find a sisterhood rooted in encouragement, authenticity, and a deep sense of belonging. It’s the kind of friendship that feels like family, uplifts you during life’s challenges, and constantly pushes you to grow into the best version of yourself.

We know recruitment can feel overwhelming at times, but we truly believe every woman ends up exactly where she is meant to be. As you go through this process, we hope you feel seen, supported, and celebrated for who you are. We’re not here to change you—we’re here to walk alongside you as you become who you’re meant to be.

As you begin recruitment, I encourage you to look for women who inspire you—who embody the kind of person you hope to become by the time you leave Oklahoma State. We can’t wait to show you a glimpse of the sisterhood we hold so dear, and we’re cheering you on every step of the way!

Love in Chi Omega,

Lydia Landgraf | Chapter President - Chi Omega







VALUES: TRUTH, SELF-SACRIFICE, AND FRIENDSHIP

## DELTA DELTA DELTA

**Nickname:** “Tri Delta”  
**Local Chapter:** Phi Upsilon  
**National Founding Day:** November 27, 1888  
**Local Founding Day:** November 15, 1962  
**Colors:** Silver, Gold, & Cerulean Blue  
**Mascot:** Dolphin  
**National Philanthropy:** St. Jude Children’s Research Hospital  
**Local Philanthropy:** Art With A Heart  
**GPA Requirements:** High school: 3.0/4.0 | College: 3.0/4.0  
**Meals Served Per Week:** 14 Meals (plus a stocked snack kitchen)  
**Room & Board Dues:** \$5,467

**Out-of-House Dues:** \$1,802  
**One-time New Member Fee:** \$454  
**Women Per Room:** 2-3  
**Length of New Member Program:** 5 weeks  
**National Website:** <https://tridelta.org/>  
**Local Website:** <http://okstate.tridelta.org/>  
**Social Media:**  
TikTok: @ostate.tridelta  
Facebook: Oklahoma State Tri Delta  
Instagram: @okstatetridelta

1506 W. THIRD · STILLWATER, OK 74074



Dear Potential New Member, Welcome to Oklahoma State University! On behalf of the Phi Upsilon chapter of Delta Delta Delta, I am so excited to welcome you to one of the most memorable and meaningful weeks of your collegiate journey–Recruitment Week! This week is all about finding the place where you feel most at home, where you can be your most authentic self, and where lifelong friendships begin!

At Tri Delta, we are guided by our core values of truth, self-sacrifice, and friendship–values that inspire us to make a positive impact in each other’s lives and in the world around us. Tri Delta is more than just a sisterhood. It’s a bond that unites women who are committed to uplifting one another, encouraging personal growth, and sharing in a genuine friendship that lasts far beyond our college years. It’s a chance to be part of something bigger than yourself—an empowering, supportive community where you can truly thrive.

As you navigate this week, know that we are just as eager to get to know you as you are to learn about us. Recruitment can sometimes feel overwhelming but take a deep breath and remember you’ve already taken a brave and exciting step by being here. No matter where you find your home, we are so proud of you for embracing this journey! Take time to appreciate every moment–you’re beginning a chapter filled with growth, memories, and incredible opportunities!

We can’t wait to meet you!

Delta Love,

Arin Bailey | Chapter President – Delta Delta Delta



VALUES: LOVE, LABOR, LEARNING, AND LOYALTY

## GAMMA PHI BETA

**Nickname:** “Gphi”  
**Local Chapter:** Beta Psi  
**National Founding Day:** November 11, 1874  
**Local Founding Day:** February 8, 1958  
**Colors:** Brown & Mode  
**Mascot:** Crescent Moon  
**National Philanthropy:** Girls On The Run  
**GPA Requirements:** High school: 3.4/4.0 | College: 3.2/4.0  
**Meals Served Per Week:** 14 Meals (plus a stocked snack bar + kitchenette) for in-house members & 1 dinner and 5 lunches for out-of-house members  
**Room & Board Dues:** \$4,760 per semester

**Out-of-House Dues:** \$1,660 per semester  
**One-time New Member Fee:** \$700  
**Women Per Room:** 2-8  
**Length of New Member Program:** 4 weeks  
**National Website:** [www.gammaphibeta.org](http://www.gammaphibeta.org)  
**Local Website:** <https://tinyurl.com/gammaphibeta-okstate>  
**Social Media:**  
TikTok: @okstategphib  
Facebook: Gamma Phi Beta Oklahoma State University  
Instagram: @okstategphib

1405 W. THIRD · STILLWATER, OK 74074

Dear Sweet PNM, On behalf of Gamma Phi Beta, welcome to recruitment! We know that this time is filled with hard decisions and new life changes, but we want to remind you that you are so deeply loved and this is just the beginning of your story at Oklahoma State. What a blessing that you are here, looking to find your new lifelong friends.

When I went through recruitment, I longed for a sisterhood, having never experienced it growing up. When I walked through the halls of Gamma Phi Beta, I remember thinking “this must be it.” This is what sisterhood feels like. This is where I belong.

Throughout my years in Gphi, I’ve learned how to be confident, compassionate, and loyal to the women around me, all traits that were fostered under the roof of Gamma Phi. I’ve met women who will become my future bridesmaids, who make me laugh until it hurts, and who cheer me on in all seasons of my life– good and bad. I would not be the person that I am today without the love that Gamma Phi has given so freely to me. My only hope is that I may love and cherish her, the way she has so wholly loved and cherished me.

PNM, that is all that I wish for you, as you go through recruitment. To find a sorority that feels like home, where you can pour all of your heart into. A place where you can grow, cry, learn, laugh, and love with the sweetest of sisters. Know that wherever you go, and whenever you may need a friend, you have one in us.

From the Crescent Moon and Back,

Kalynn Geranen | Chapter President - Gamma Phi Beta







VALUES: SCHOLARSHIP, SERVICE, LEADERSHIP, FRIENDSHIP, AND PERSONAL EXCELLENCE

## KAPPA ALPHA THETA

**Nickname:** “Theta”

**Local Chapter:** Beta Zeta

**National Founding Day:** January 27, 1870

**Local Founding Day:** September 5, 1919

**Colors:** Black & Gold

**Mascot:** Kite

**National Philanthropy:** Court Appointed Special Advocates (CASA)

**Local Philanthropy:** Payne County CASA

**GPA Requirements:** High school: 3.2/4.0 | College: 2.75/4.0

**Meals Served Per Week:** 14 (with food provided on weekends)

**Room & Board Dues:** \$4,130

**Out-of-House Dues:** \$1,730

**One-time New Member Fee:** \$500

**Women Per Room:** 2-5

**Length of New Member Program:** 4-6 weeks

**National Website:** [kappaalphatheta.org](http://kappaalphatheta.org)

**Local Website:** <https://okstate.kappaalphatheta.org/>

**Social Media:**

Twitter: @BZ\_Theta

Facebook: Beta Zeta Chapter of Kappa Alpha Theta

Instagram: @okstatetheta

1323 W. UNIVERSITY · STILLWATER, OK 74074



Dear potential new member, Welcome to Oklahoma State University and congratulations on taking your first steps toward joining one of the most rewarding and exciting communities on campus! Choosing to go through Panhellenic recruitment is a decision that will open doors to friendships, opportunities, and memories that will stay with you long after college.

As Chapter President of Kappa Alpha Theta, I can confidently say that joining this sisterhood has been one of the most defining parts of my college experience. Theta has given me a space to grow as a leader, thrive academically, and build friendships that truly will last a lifetime. But more than anything, Theta has given me a sense of purpose and belonging.

What makes Theta so special is our diversity of thought, passion, and personality, however, we can all come together through our shared values of faith, hope, and love. Whether it's late-night study sessions, cheering each other on through life's highs and lows, or simply sharing a laugh in the living room, you'll find women here who will lift you up and love you for exactly who you are.

As you begin this journey, I encourage you to walk into every conversation with an open heart and an open mind. Recruitment can feel overwhelming, but it's also a beautiful opportunity to find the place that feels like home, the place where you feel seen, supported, and celebrated.

We're so excited to meet you, and we'll be cheering you on every step of the way. No matter where you end up, remember you will always have a friend at Theta.

Theta Love and Mine - Ashley Winter | Chapter President - Kappa Alpha Theta



VALUES: FRIENDSHIP, LOYALTY, PERSONAL INTEGRITY, LIFELONG LEARNING, AND SELFLESS SERVICE

## KAPPA DELTA

**Nickname:** “KD”

**Local Chapter:** Nu Chapter

**National Founding Day:** October 23, 1897

**Local Founding Day:** August 9, 1919

**Colors:** Olive Green & Pearl White

**Mascot:** Dagger, Nautilus Shell, & Teddy Bear

**National Philanthropy:** Prevent Child Abuse America & Girl Scouts of the USA

**Local Philanthropy:** Wings of Hope

**GPA Requirements:** High school: 3.4/4.0 | College: 3.1/4.0

**Meals Served Per Week:** All 3 meals Monday - Thursday and Friday breakfast and lunch - covered by in-house and out-of-house fees

**Room & Board Dues:** \$4,348

**Out-of-House Dues:** \$1,321

**One-time New Member Fee:** \$922

**Women Per Room:** 2-5

**Length of New Member Program:** 8 weeks

**National Website:** <http://kappadelta.org/>

**Local Website:** <http://okstate.kappadelta.org/>

**Social Media:**

Facebook: Oklahoma State Kappa Delta

Instagram: @okstate\_kd

220 S. CLEVELAND · STILLWATER, OK 74074



Dear Potential New Member, On behalf of all of us at Kappa Delta, welcome to the best campus on Earth—Oklahoma State! We are truly so excited and grateful that you are joining our amazing Panhellenic community. You're stepping into such a new and exciting chapter, and we feel so honored to be even a small part of your journey.

At Kappa Delta, we strive each day to live out what is honorable, beautiful, and highest—by choosing love, kindness, and connection, no matter what circle someone is in. Our values—friendship & loyalty, personal integrity, lifelong learning, and selfless service—are more than just words to us; they guide how we support one another and the women around us.

We hope to create a space that encourages every woman, both in Kappa Delta and across our Panhellenic community, to grow into the strongest, most confident version of herself. Sisterhood here means showing up for each other, growing together, and building friendships that last a lifetime. We hope and pray you find the kind of friendship you've always dreamed of—and maybe even more.

We know this week can feel overwhelming at times, but please know you're not alone. Every single member of KD is in your corner, cheering you on as you take each step toward finding the place that feels like home. Go confidently, knowing that who you are is more than enough—and that's exactly who we can't wait to meet! Just know that you always have a friend at 220 S Cleveland Street!

With so much love,

Kayla Allen | Chapter President - Kappa Delta





VALUES: KNOWLEDGE, TRUTH, CONNECTION, RESPECT, OPTIMISM & TRAILBLAZING

## KAPPA KAPPA GAMMA

**Nickname:** “Kappa”

**Local Chapter:** Delta Sigma

**National Founding Day:** October 13, 1870

**Local Founding Day:** April 12, 1947

**Colors:** Light Blue & Dark Blue

**Mascot:** Owl & Key

**Flower:** Fleur de lis

**National Philanthropy:** Active Minds

**Local Philanthropy:** The American Heart Association

**GPA Requirements:** High school: 3.4 /4.0 | College: 3.0 /4.0

**Meals Served Per Week:** 14 (plus stocked snack kitchen)

**Room & Board Dues:** \$5,276.50

**Out-of-House Dues:** \$2,430

**One-time New Member Fee:** \$675

**Per Capita Fee:** \$175

**Women Per Room:** 2-5

**Length of New Member Program:** 8 weeks

**National Website:** <https://www.kappakappagamma.org>

**Local Website:** <https://okstate.kappa.org>

**Social Media:**

Instagram: okstatekkg

Twitter: okstateKKG

1212 W. FOURTH AVE · STILLWATER, OK 74074



Dear PNM,

I’m here to say good luck as you take your first steps into formal recruitment! This is such a special time to meet new people, make memories and begin a brand new chapter of your life. Going through my recruitment, I had no idea how much Kappa Kappa Gamma and the Panhellenic community would mean to me. I didn’t just find a sorority, I found my forever home. The women of Kappa Kappa Gamma have shown me the true difference between a friend and a sister, and my college years would be incomplete without the memories they have given me to cherish forever. The four walls that make up the Delta Sigma chapter have given me my biggest supporters, my daily inspirations and my future bridesmaids.

When I walked into Kappa during my recruitment process, I looked up at the women I could only dream of becoming. I can now look around my house and smile knowing that I am amongst that same legacy of a strong, selfless, classy, driven and unforgettable sisterhood. My Kappa sisters make the hard times easier and the good times so much sweeter. My hope for you is that you find a place where you feel celebrated for who you are and surrounded by people who will stand beside you through every step of the way, just like I did. Trust the process, listen to your heart and know that wherever you end up, it’ll be exactly where you’re meant to be.

We can’t wait to meet you and cheer you on! No matter what, you’ll always have a friend in Kappa!

With love and Kappa pride,

Jacqueline Chavez | Chapter President - Kappa Kappa Gamma



VALUES: LOVE, HONOR, AND TRUTH

## PHI MU

**Nickname:** “Phi Mu”

**Local Chapter:** Epsilon Nu

**National Founding Day:** March 4, 1852

**Local Founding Day:** October 26, 1979

**Colors:** Rose and White

**Mascot:** Sir Fidel Lion & Quatrefoil

**National Philanthropy:** Children’s Miracle Network Hospital

**Local Philanthropy:** Payne County Youth Shelter & Stillwater Humane Society

**GPA Requirements:** High school: 3.0/4.0 | College: 3.0/4.0

**Meals Served Per Week:** 14

**Room & Board Dues:** \$3,700

**Out-of-House Dues:** \$1,050

**One-time New Member Fee:** \$150

**Women Per Room:** 4-6

**Length of New Member Program:** 8 weeks

**National Website:** <https://www.phimu.org/>

**Social Media:**

Instagram: @phimuokstate

TikTok: @phimuokstate

1523 W. FOURTH · STILLWATER, OK 74074

Dear Potential New Member,

Welcome to OSU! On behalf of the Epsilon Nu Chapter of Phi Mu, we are so excited that you are here!

Phi Mu is built on three strong values: love, honor, and truth. These three values are more than just words, they shape the way we choose to live our lives every day. As a chapter, we strive for excellence in everything we do, fostering an environment where every member feels valued, empowered, and inspired to reach their full potential - reflecting the true spirit of our values.

Just three short years ago, I was in your shoes, nervous about what was to come. Leaving my home state for college, I was overwhelmed with uncertainty and afraid I would never find my place. Thankfully, I couldn't have been more wrong. The women of Phi Mu have become my family and shaped me into the woman I always hoped I could be.

If I could leave you with one piece of advice, it is to unapologetically be yourself. Stay true to your values, strong in your beliefs, and everything that makes you uniquely you. This journey is about more than just joining a sorority - it's about finding your home. My biggest hope is that you find a sisterhood that feels just as much like home to you as Phi Mu does to me. No matter where this journey takes you - you will always have a friend in Phi Mu.

Love in Our Bond,

Grace Christner | Chapter President - Phi Mu







VALUES: INTEGRITY, LIFELONG COMMITMENT, HONOR, AND RESPECT

VALUES: HUMILITY, LEADERSHIP, LIFE-LONG LEARNING, AND LOVE

## PI BETA PHI

## ZETA TAU ALPHA

**Nickname:** “Pi Phi”  
**Local Chapter:** Oklahoma Beta  
**National Founding Day:** April 28, 1867  
**Local Founding Day:** August 12, 1919  
**Colors:** Wine & Silver Blue  
**Mascot:** Angels & Arrows  
**National Philanthropy:** Read>Lead>Achieve  
**Local Philanthropy:** In the Middle of a Miracle  
**GPA Requirements:** High school: 3.25/4.0 | College: 3.1/4.0  
**Meals Served Per Week:** 14 (plus a stocked snack bar)

**Room & Board Dues:** \$4,865  
**Out-of-House Dues:** \$1,764  
**One-time New Member Fee:** \$965  
**Women Per Room:** 2-12  
**Length of New Member Program:** 7-9 weeks  
**National Website:** [www.pibetaphi.org](http://www.pibetaphi.org)  
**Local Website:** <https://okstate.pibetaphi.org/>  
**Social Media:**  
TikTok: @okstate.piphi  
Instagram: @okstatepiphi

**Nickname:** “Zeta”, “ZTA”  
**Local Chapter:** Alpha Upsilon  
**National Founding Day:** October 15, 1898  
**Local Founding Day:** August 17, 1923  
**Colors:** Turquoise Blue and Steel Grey  
**Mascot:** Five Point Crown  
**National Philanthropy:** Breast Cancer Education and Awareness  
**GPA Requirements:** High school: 3.2/4.0 | College: 3.2/4.0  
**Meals Served Per Week:** 14 for in-house members (with food available on the weekends) & 9 meals for out-of-house members

**Out-of-House Dues:** \$2,645  
**One-time New Member Fee:** \$250  
**Women Per Room:** 2-4  
**Length of New Member Program:** 7 weeks  
**National Website:** <https://zetataualpha.org>  
**Local Website:** <https://okstate.zetataualpha.org>  
**Social Media:**  
Instagram: @okstatezta  
TikTok: @oklahomastatezetatas  
Twitter: @okstatezta

324 S. CLEVELAND • STILLWATER, OK 74074

1001 W. UNIVERSITY • STILLWATER, OK 74074

Dear Potential New Member,

On behalf of the Oklahoma Beta Chapter of Pi Beta Phi, we are thrilled to welcome you to Greek Life at Oklahoma State University!

This campus and our Panhellenic community have far exceeded my expectations of what it looks like to love, encourage, and walk alongside your neighbor. We have no doubt that you will experience this same sense of family in this community during your time at Oklahoma State. I am so excited for you to begin your Greek Life journey soon! Everyday women in Pi Phi are challenged to be the best version of themselves. It's a place where women are celebrated for exactly who they are. Personal and intellectual growth are accomplished over the years spent with this sisterhood. There is not one definition of a “Pi Phi” and that is what makes this sisterhood so special. When you look at Pi Beta Phi you will see drive, intellect, and confidence. You will also be met with grace, kindness, and sincerity. I am not the same girl I was when I walked on this campus 2 years ago, and I have my friends at Pi Phi to thank for that. Pi Phi has truly blessed me with friends who make me laugh until I cry, pick me up when I'm down, and will stand beside me at my wedding. If I could give you all one piece of advice it would be to walk confidently in who you are during this process. You will find your perfect home in greek life no matter what path you choose! I cannot wait to see what your future at OSU will hold! Ring Ching!

PPLAM,

Kenna Lake | Chapter President - Pi Beta Phi

Hello and welcome to Oklahoma State!

On behalf of the women of the Alpha Upsilon chapter of Zeta Tau Alpha, we are so excited you made the decision to go Greek! I've made the best memories here at OSU. The experiences and relationships that I cherish the most happened right here in Zeta!

Zeta lives by the motto “Seek the Noblest,” which basically means we're all about lifting each other up, going after big dreams, and being the best versions of ourselves. My favorite thing about our sisterhood is how everyone shows up as their full, unapologetic selves. We laugh a lot, support each other through everything, and genuinely love what makes each of us unique.

Recruitment can feel like a rollercoaster, so just go with your gut, find where you feel like your best self, and don't stress the timeline, whether it's formal recruitment or continuous open bidding, there's no wrong way to find your people. No matter where you find your home, I'm confident it will lead you to an amazing sisterhood!

Zeta Love,

Summer Wilson | Chapter President - Zeta Tau Alpha





# TERMS TO KNOW

**Alumna (Plural: Alumnae)** – An initiated sorority member who is no longer in college.

**Bid** – An invitation extended by only one sorority per potential new member on Bid Day; this is the formal invitation to become a new member of that sorority.

**Chapter** – The women comprising each local collegiate group of an inter/national sorority. OSU has 12 sorority chapters on campus that participate in recruitment.

**Colony** – A new fraternity or sorority that is working to receive a charter from the inter/national organization to which it is affiliated. When a charter is received, they become a chapter of that inter/national organization.

**Continuous Open Bidding (COB)** – Another form of recruitment other than Formal Recruitment that is a more informal and relaxed way for Potential New Members to go through recruitment and join a Panhellenic chapter, and for Panhellenic chapters acquire new members. If a chapter has less than their set total number of members, they may participate in COB. It is not a guarantee that every chapter will participate in COB.

**Current Member** – The term used to indicate a current sorority woman or a fraternity man who has been formally initiated by his or her chapter.

**Formal Recruitment** – The formal process of mutual selection by which chapters invite potential new members to join their sorority prior to the fall semester.

**Initiation** – The formal ceremonies by which new members complete membership into a chapter and receive full membership privileges.

**Legacy** – A woman whose mother, sister or, in some cases, grandmother or half-sister is an alumna or active member of a sorority. A sorority is not obligated to offer a bid to a legacy, and a potential new member is completely free to choose the sorority of her individual preference.

**New Member** – A potential new member who has accepted the bid of a sorority and has taken the first step toward full membership but has not yet been initiated.

**Panhellenic Association** – The term that refers to all members of the sorority community at Oklahoma State University.

**Panhellenic Council** – An organization composed of representatives of each sorority chapter who act as the central governing body of all sororities.

**Potential New Member (PNM)** – An unaffiliated woman who attends formal recruitment or participates in Continuous Open Bidding.

**Quota** – The number of new members that each Panhellenic sorority may select during formal recruitment.

**Recruitment Counselor (Gamma Chi)** – A member of a Panhellenic chapter who assists PNMs during the recruitment process. This woman completely disaffiliates from her sorority to provide objective advice and support.

**Recruitment Group** – A group of 50-60 women women who live in close proximity to each other and are led by a Recruitment Counselor. This group will attend all of the Open House events together on the first and second days of recruitment.

**Rec. Letter** – A recommendation letter is written by an alumna of a specific chapter. These letters are not required for participation in recruitment. Any letters Potential New Members are given are to only be submitted online to the national organization. Any letters given to the Office of Fraternity and Sorority Affairs will be destroyed.

**Sorority (Women’s Fraternity)** – A values-based, social Greek letter, sisterhood organization based on the fundamental right of a free people to form voluntary associations.

**Total** – The allowable chapter size that is evaluated and determined by the Panhellenic Council every year. It includes both new and active members, and usually reflects the average or median chapter size. Chapter total is the total number of members that a chapter may recruit to during Continuous Open Bidding.



# GREEK ALPHABET & PRONUNCIATIONS

<b>A</b> ALPHA "al-fah"	<b>B</b> BETA "bay-tah"	<b>Γ</b> GAMMA "gam-ah"	<b>Δ</b> DELTA "del-ta"	<b>E</b> EPSILON "ep-si-lon"
<b>Z</b> ZETA "zay-tah"	<b>H</b> ETA "ay-tah"	<b>Θ</b> THETA "thay-tah"	<b>I</b> IOTA "eye-oh-tah"	<b>K</b> KAPPA "cap-pah"
<b>Λ</b> LAMBDA "lam-dah"	<b>M</b> MU "mew"	<b>N</b> NU "new"	<b>Ξ</b> XI "zie"	<b>Ο</b> OMICRON "om-e-cron"
<b>Π</b> PI "pie"	<b>Ρ</b> RHO "row"	<b>Σ</b> SIGMA "sig-mah"	<b>Τ</b> TAU "taw"	<b>Υ</b> UPSILON "oop-si-lon"
<b>Φ</b> PHI "fie"	<b>Χ</b> CHI "kie"	<b>Ψ</b> PSI "sigh"	<b>Ω</b> OMEGA "oh-may-gah"	





## FREQUENTLY ASKED QUESTIONS

## FREQUENTLY ASKED QUESTIONS

### When are recommendation letters due?

There is not a due date for recommendation letters. The earlier they are sent in, the better off you will be. However, recommendation letters can be sent in as late as August. Please note, recommendation letters must be sent directly to the chapters using the addresses found on the Chapter Profile Pages. Alumnae are also encouraged to submit electronic recommendation forms online by visiting their inter/national chapter's website before recruitment.

### What if I don't have a recommendation letter for every chapter?

You are not required to have any letters of recommendation to go through recruitment. If you know alumnae from chapters we have on campus, ask them to write you a letter. These letters are written to introduce you to the chapter members, but it does not guarantee you will be given a bid to a certain chapter.

### What if I don't visit the maximum number of chapters during each round?

During the recruitment process, the number of chapters a PNM will visit each day will vary from one woman to the next. The majority of women who go through recruitment at OSU do not have full schedules of events to attend. The number of events is not important; it is the conversations and people you are interacting with that are important.

### If I am going through recruitment as a sophomore or going through again, am I at a disadvantage?

Many women choose to go through recruitment as a sophomore or junior for various reasons. As long as your high school GPA is at least a 3.0, or your college GPA is at least a 2.7, and you have been involved in campus and community activities, you should not have a problem. For those going through recruitment a second time, there is a chance that chapters that released you the first time through will release you again. You should keep an open mind and discuss all the activities in which you have been involved over the past year as well as let the sororities know why you are going through a second time.

### Am I guaranteed to receive an invitation for membership (bid) from a chapter?

Invitations are only guaranteed to Potential new members for the first round, which takes place on August 6 & 7. There is no guarantee that you will be invited to attend the second, third, or fourth rounds. There is no specific formula that defines why a woman is not invited back. Therefore, there is no guarantee you will receive a bid to any sorority. However, if you progress through the week and attend all the events you are invited to during the fourth event round and list each of those chapters on your preference sheet that night, you will receive a bid to one of those chapters.

### Will my grades suffer if I am in a sorority?

The all-Greek average GPA at OSU is consistently higher than the non-Greek average GPA. The average Panhellenic women's undergraduate GPA is 3.49 while the All Non Greek undergraduate Women's GPA is 3.25. Each sorority has its own scholarship program that will help you succeed academically as well as learn to effectively manage your time outside of class.

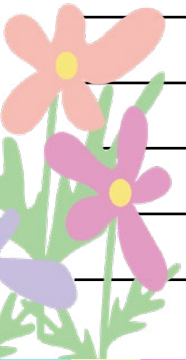
### Will I be able to work in addition to being in a sorority?

Many chapter members at OSU have part-time jobs in addition to being in a fraternity or sorority.





A decorative sheet of lined paper. It features a light blue horizontal header at the top. Below the header are several horizontal ruling lines. In the bottom left corner, there is a colorful illustration of two flowers: one is pink with a yellow center, and the other is orange with a yellow center. The flowers are stylized and have green stems and leaves.



- Bid Day House Flowers
- Mid Week Good Luck Flowers
- Succulents and plants
- Snack Baskets
- OSU Gifts



**918 S. Main St, Stillwater, OK 74074**  
**405 · 937 · 0791 | [stillyfloral.com](http://stillyfloral.com)**

**Follow us on Instagram & Facebook!**



| @stillyfloral



## Stilly Floral





**FIRST SERVICE FREE  
FOR NEW CLIENTS**



RED LIGHT • FULL BODY SKIN HYDRATION • TOTAL LIGHT THERAPY

**UNLIMITED  
SPRAY • SUN • SPA**

MUST BE NEW TO GLO AND 18+  
514 W 6TH AVE STILLWATER, OK 74074



# J. COLE SHOES

**BIRKENSTOCK®**

@JCOLESHOES

*for movement*

SHOP BID DAY BASKETS, SHOES & CLOTHING AT JCOLESHOES.COM



@JCOLESHOES

**BID DAY BASKETS**

JCOLESHOES.COM





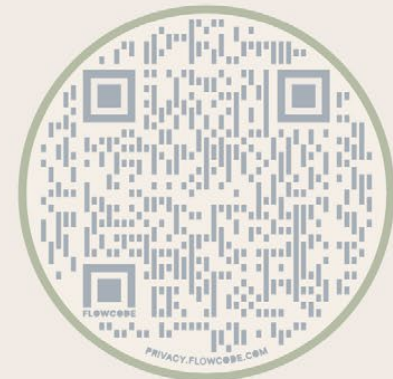
# Stillwater's Relaxation Destination

minutes from campus



haircuts • color • blonding • blowouts • handtied extensions • eyelashes • body waxing • threading • massage • facials • Kerastase • redken • colorescience • aerolase • zo skin health

From Bid Day + Beyond  
glo's got you covered





# INTRODUCING

## FAN GLAM x GREEK

### JEWELRY & ACCESSORIES

NOW AVAILABLE AT



universitystore  
AT THE STUDENT UNION



SHOP BID DAY BASKETS, CLOTHING, & SHOES AT SHOPGREIGEGOODS.COM

# GREIGE

## GOODS

shopgreigegoods.com

716 s. main st  
stillwater, ok 74074

(405) 533 - 1011

greige\_stillwater

greigegoods



# PURE SKIN AND AESTHETICS



STILLWATER'S PREMIER MEDICAL SPA | WHERE BEAUTY MEETS WELLNESS

injectables | lasers | weight loss | skincare  
esthetics | wellness

WWW.PURESKINSTILLWATER.COM

# Bid Day at Chris'

## 2025

CHOOSE FROM  
ONE OF OUR PRE-  
MADE BAGS OR  
MIX AND MATCH  
YOUR OWN!



SCAN THE QR CODE TO  
SEE ALL OF OUR  
OPTIONS

YOUR ONE STOP BID  
DAY SHOP SINCE 1986!



ChrisUniversitySpirit

ChrisUniversitySpirit

Order online, by phone or in store!  
www.ChrisUniversitySpirit.com (405) 377 - 0555



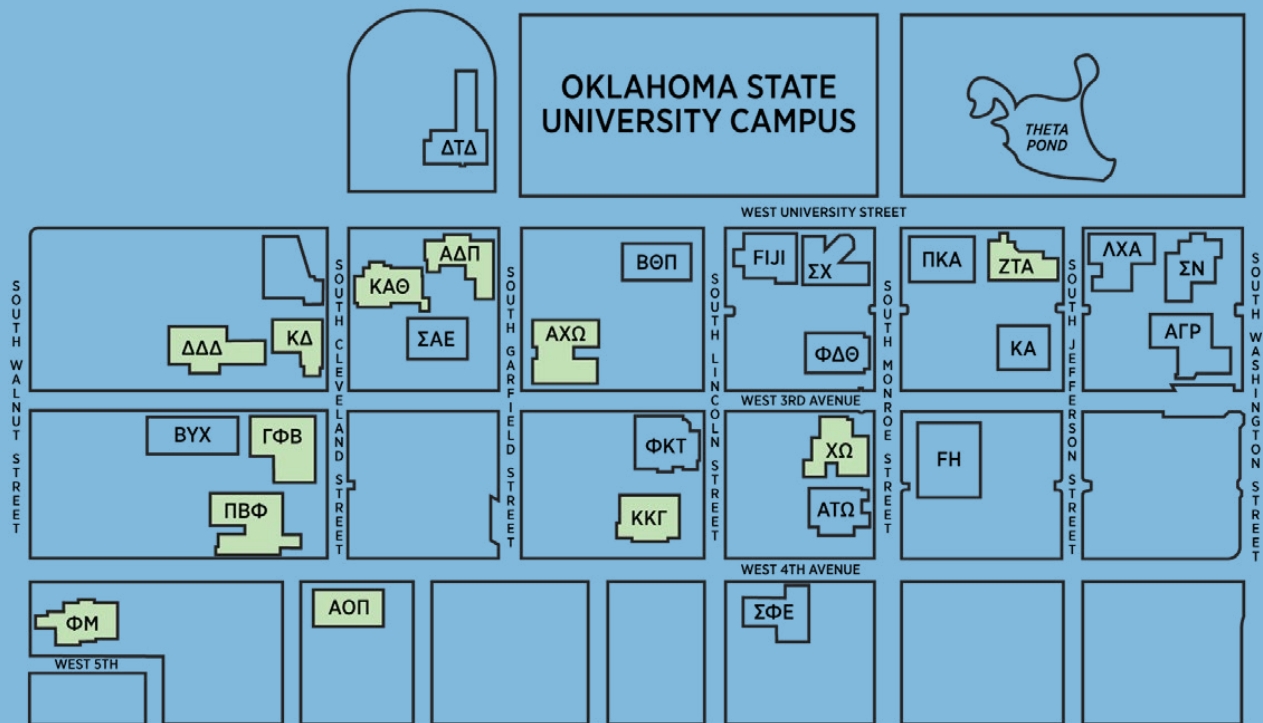




## FRATERNITY AND SORORITY AFFAIRS



# Greek Map



**ΑΧΩ** ▶ ALPHA CHI OMEGA

**ΑΔΠ** ▶ ALPHA DELTA PI

**ΑΟΠ** ▶ ALPHA OMICRON PI

**ΧΩ** ▶ CHI OMEGA

**ΔΔΔ** ▶ DELTA DELTA DELTA

**ΓΦΒ** ▶ GAMMA PHI BETA

**ΚΑΘ** ▶ KAPPA ALPHA THETA

**ΚΔ** ▶ KAPPA DELTA

**ΚΚΓ** ▶ KAPPA KAPPA GAMMA

**ΦΜ** ▶ PHI MU

**ΠΒΦ** ▶ PI BETA PHI

**ΖΤΑ** ▶ ZETA TAU ALPHA